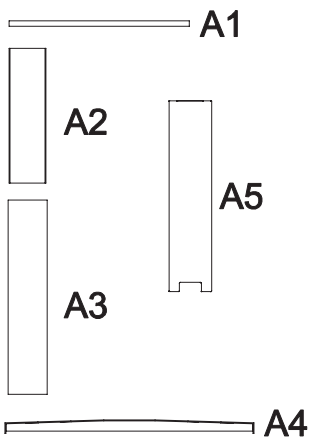


**A** stelaż biurka regulowany x 2 szt | steel legs height adjustable x 2 pcs



**B** śruba x 8 szt | screw x 8 pcs



**C** klucz imbusowy x 1 szt | allen key x 1 pc



**D** zaślepka x 4 szt | end plug x 4 pcs



**E** regulator x 4 szt | adjustable feet x 4 pcs



**F** śruba x 8 szt | screw x 8 pcs



**G** klucz imbusowy x 1 szt | allen key x 1 pc



**H** wkręt x 8 szt | sharp screw x 8 pcs



potrzebne narzędzia | necessary tools



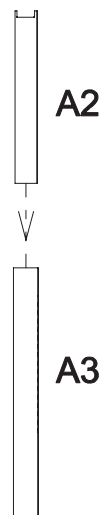
# INSTRUKCJA MONTAŻU | ASSEMBLY INSTRUCTION

## ST 226 R

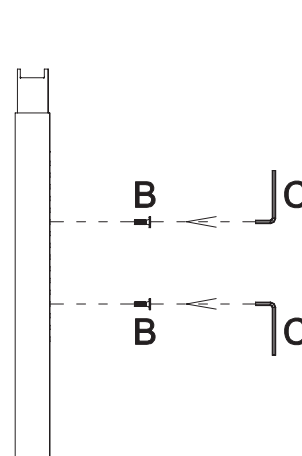


2019.08

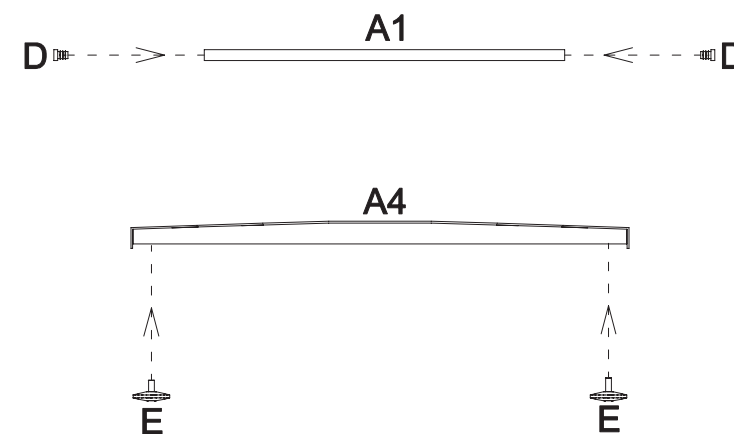
1



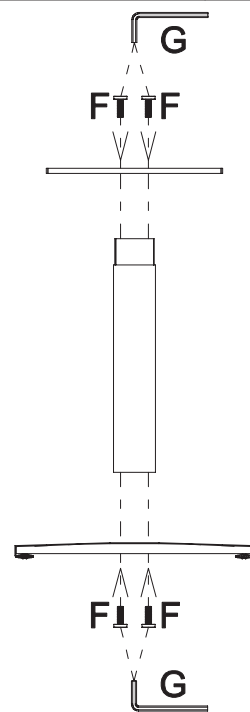
2



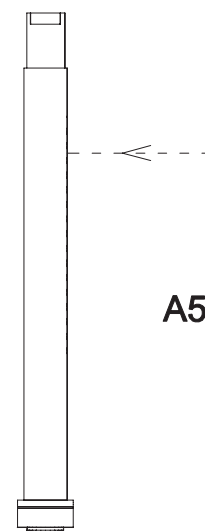
3



4



5



6

