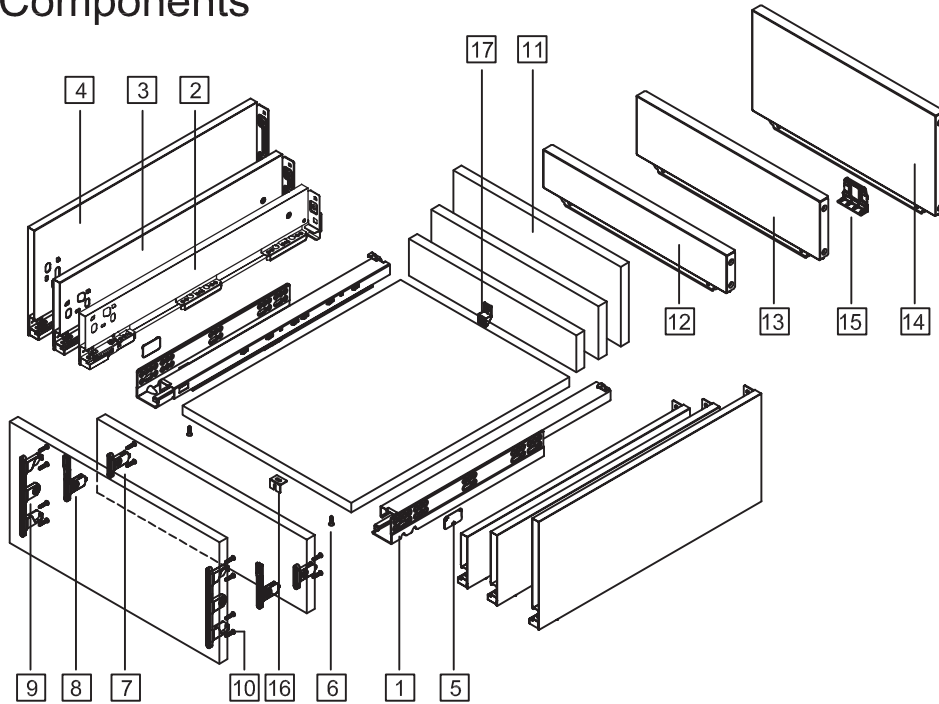


Components



1. Cabinet profiles: L/R	10. Front fixing-brackets screw (Ø4x17)	Nominal length	Internal drawer length	Min.installation length of drawer
2. 89 Drawer profiles: L/R	11. Drawer back	270mm	244mm	275mm
3. 121 Drawer profiles: L/R	12. Metal back height 89	300mm	274mm	305mm
4. 185 Drawer profiles: L/R	13. Metal back height 121	350mm	324mm	355mm
5. Side cover plate	14. Metal back height 185	400mm	374mm	405mm
6. Bottom screw (Ø3.5x15)	15. Metal back fixed	450mm	424mm	455mm
7. 89 Front fixing-brackets	16. Bottom fixing(for wide drawer)	500mm	474mm	505mm
8. 121 Front fixing-brackets	17. Back fixing(for wide drawer)	550mm	524mm	555mm
9. 185 Front fixing-brackets				

Drawer Back and Bottom Dimensions

Back

Type	89	121	185
H (mm)	59	91	155

Metal Back L=LW-42

KB ≥ 800mm
Metal back fixed

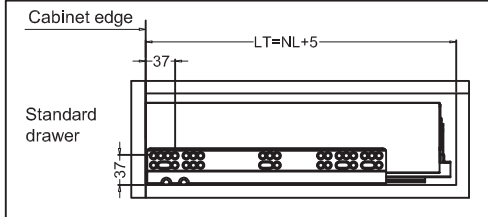
Drawer Bottom L=NL-20

270~400 450~550

KB Cabinet width
LW Internal cabinet width
NL Nominal length

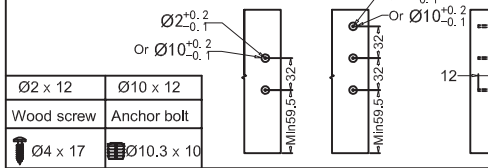
Installation dimensions (mm)

Nominal slide length=NL Internal cabinet depth=LT

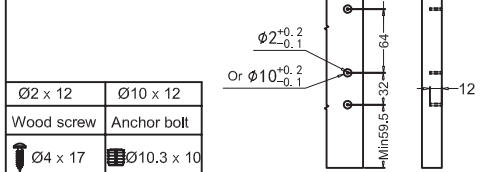


Drawer installation dimensions (mm)

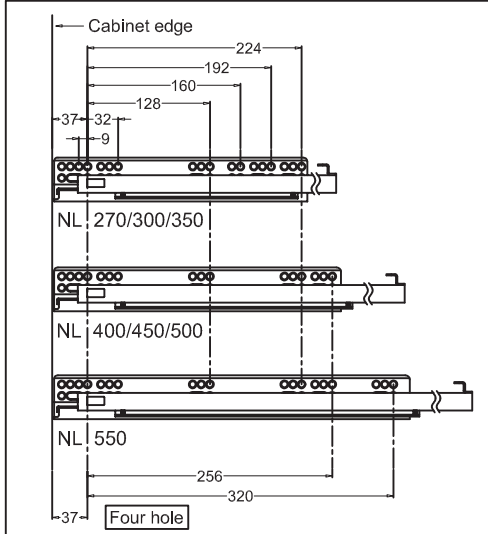
89 121 Drawer front 89 121



185 Drawer front

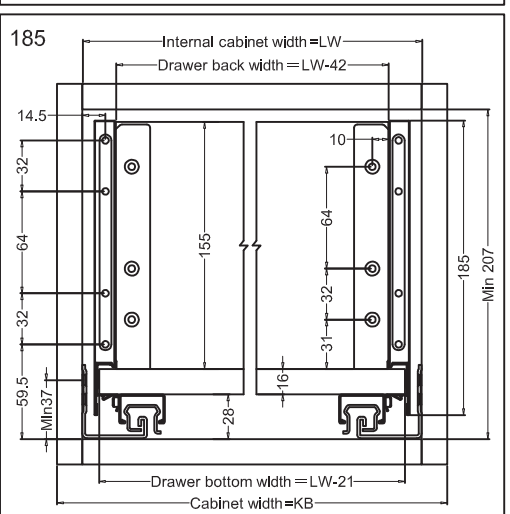
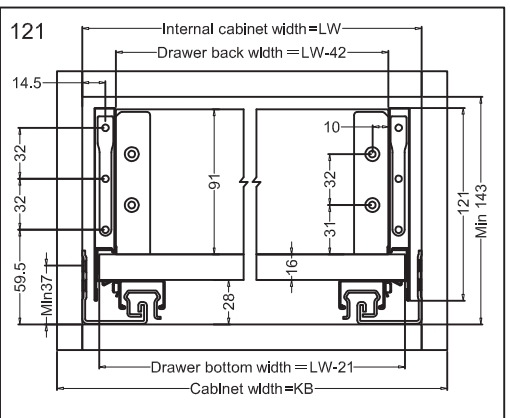
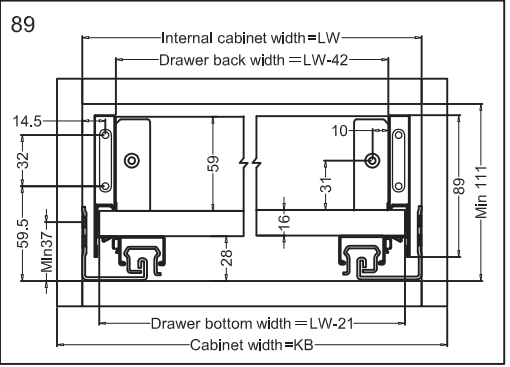


Screw positions of the sides



Drawer installation dimensions (mm)

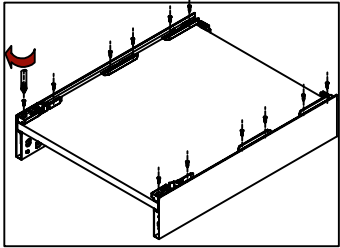
LW=Internal cabinet width



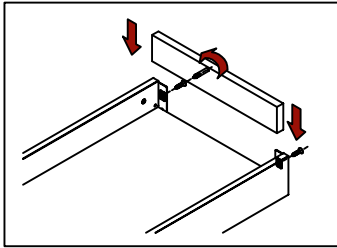
Series slender metal drawer
Assembly removal and adjustment



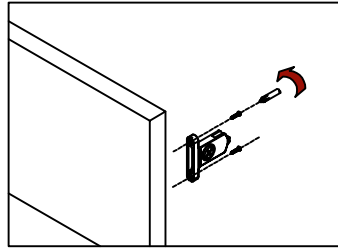
Drawer assembly



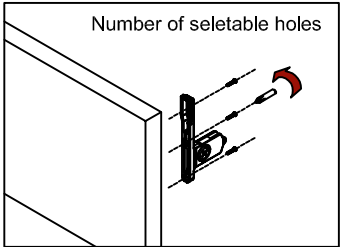
Bottom assembly



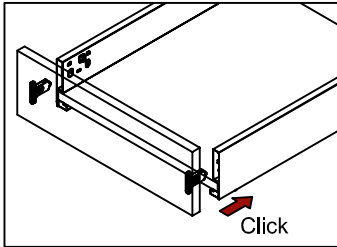
Back assembly



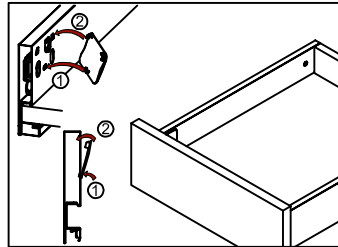
89 Front assembly



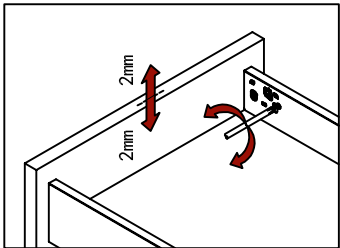
121 Front assembly



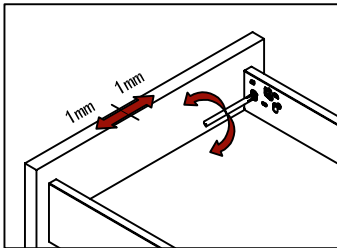
Click



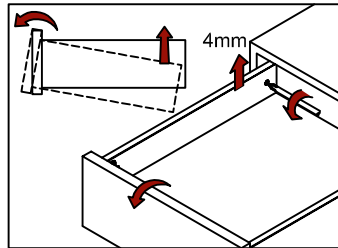
Adjustment



Up&down adjustment

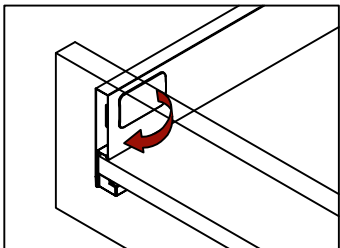


Left&right adjustment

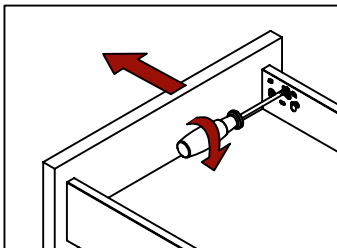


Front slope angle adjustment

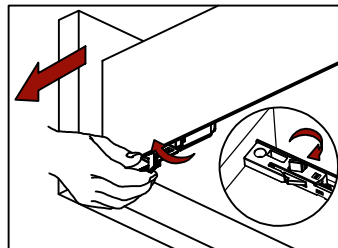
Removal



Tip up the cover and pull out



Removal drawer front

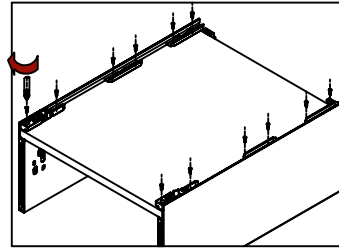


Removal drawer

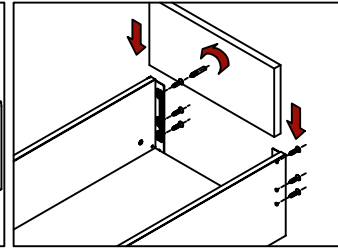
Series slender metal drawer
Assembly removal and adjustment



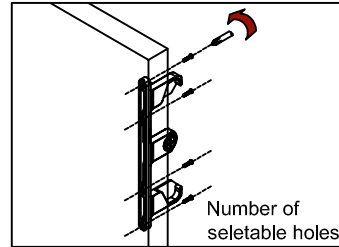
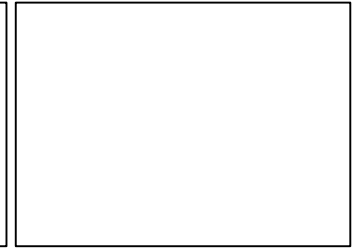
Drawer assembly



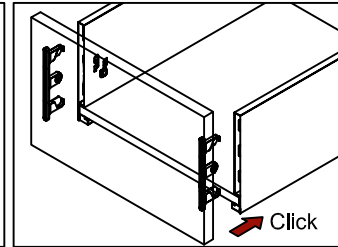
Bottom assembly



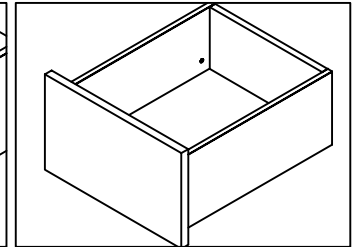
Back assembly



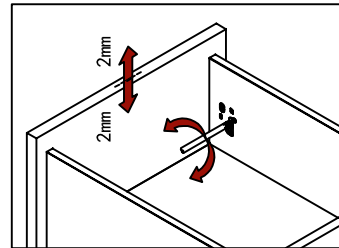
Front assembly



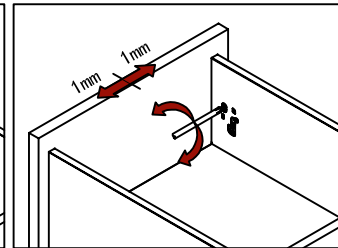
Click



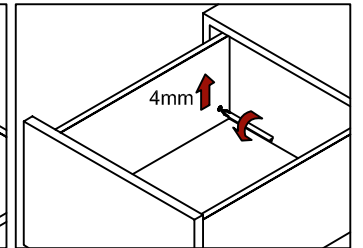
Adjustment



Up&down adjustment

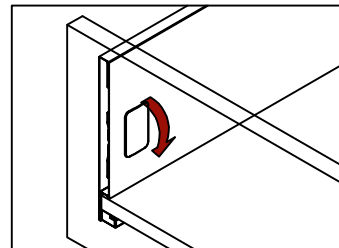


Left&right adjustment

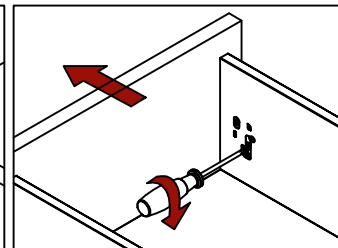


Front slope angle adjustment

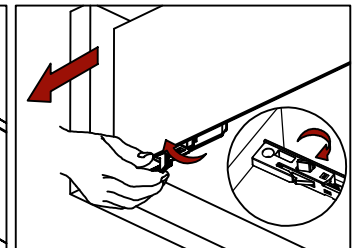
Removal



Tip up the cover and pull out



Removal drawer front



Removal drawer